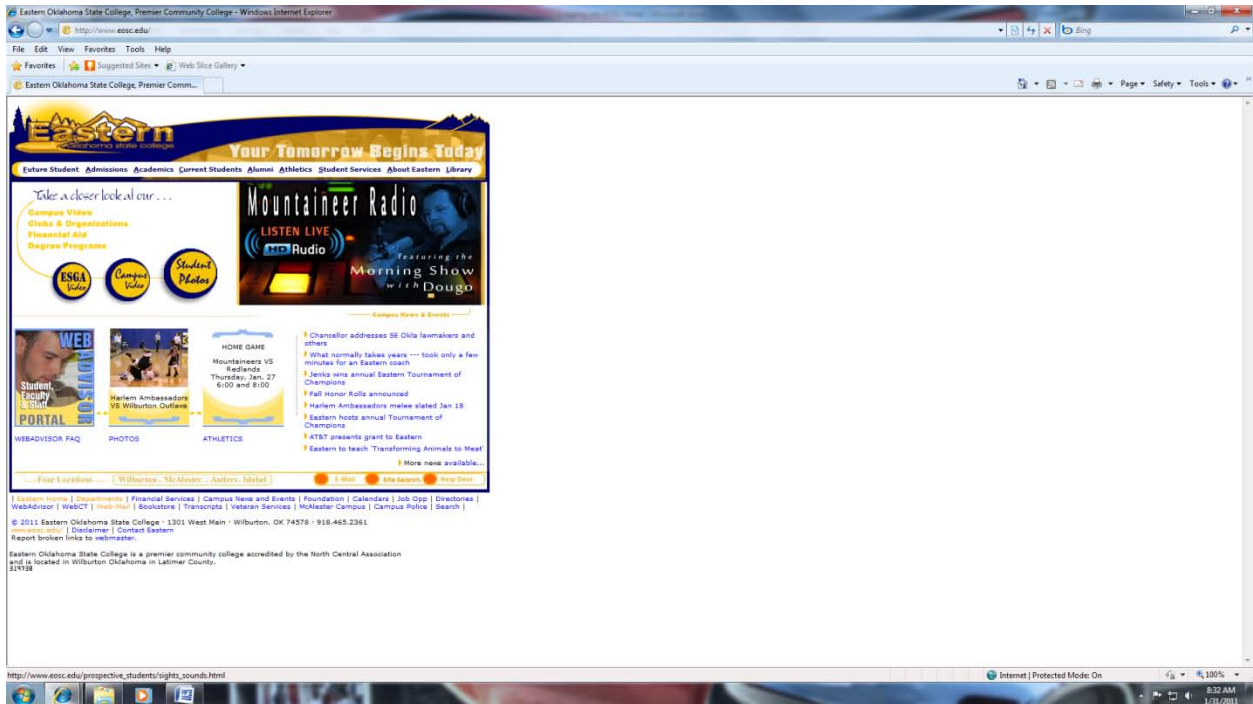
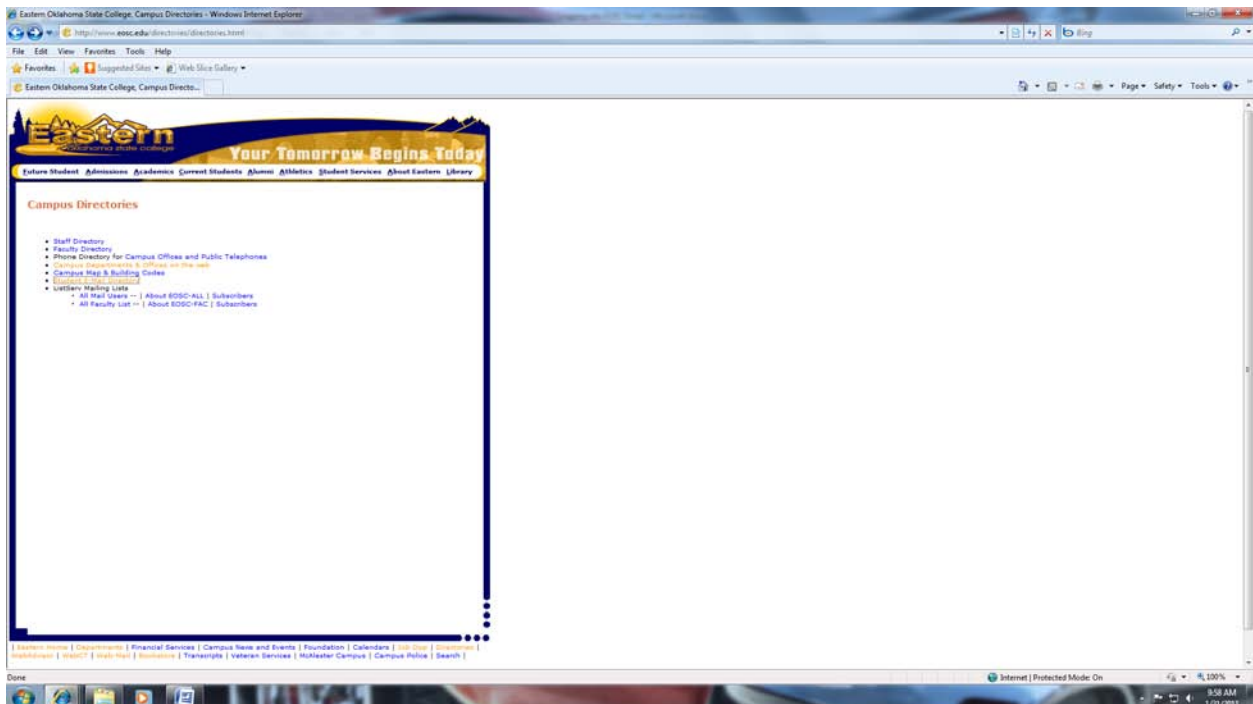


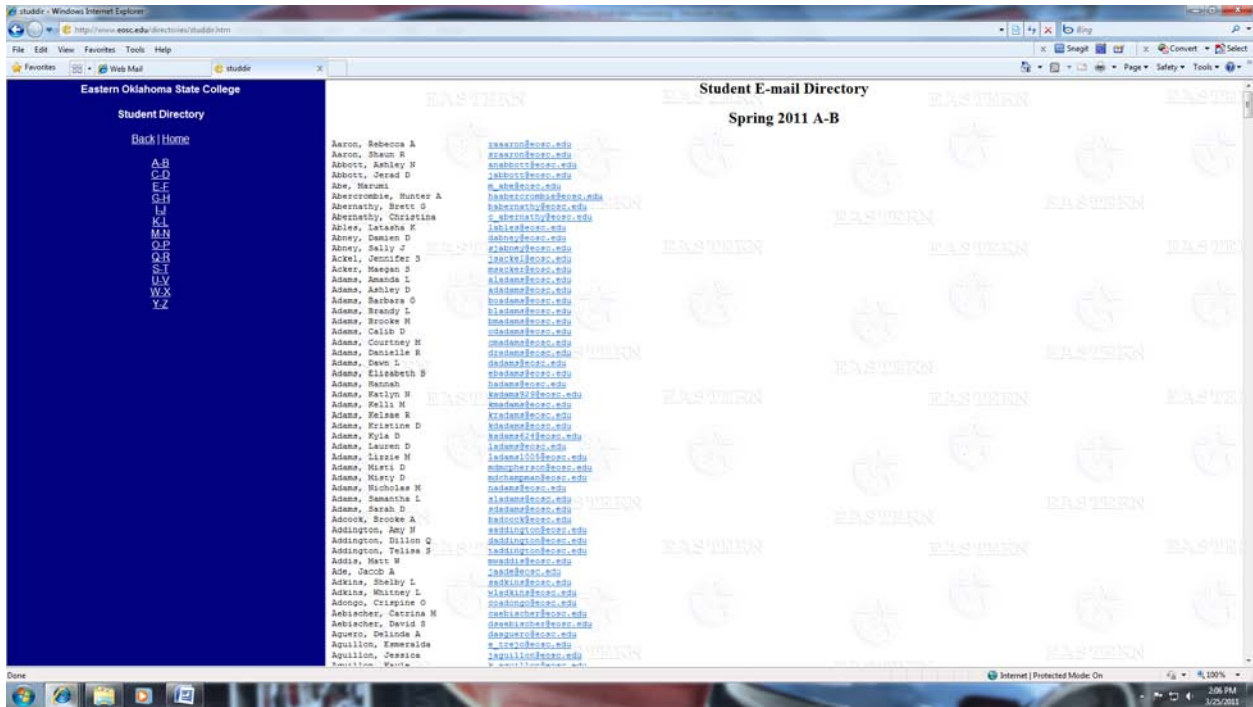
Logging Into Your EOSC Email Account

To log into your EOSC email account, go to the EOSC website: www.eosc.edu.

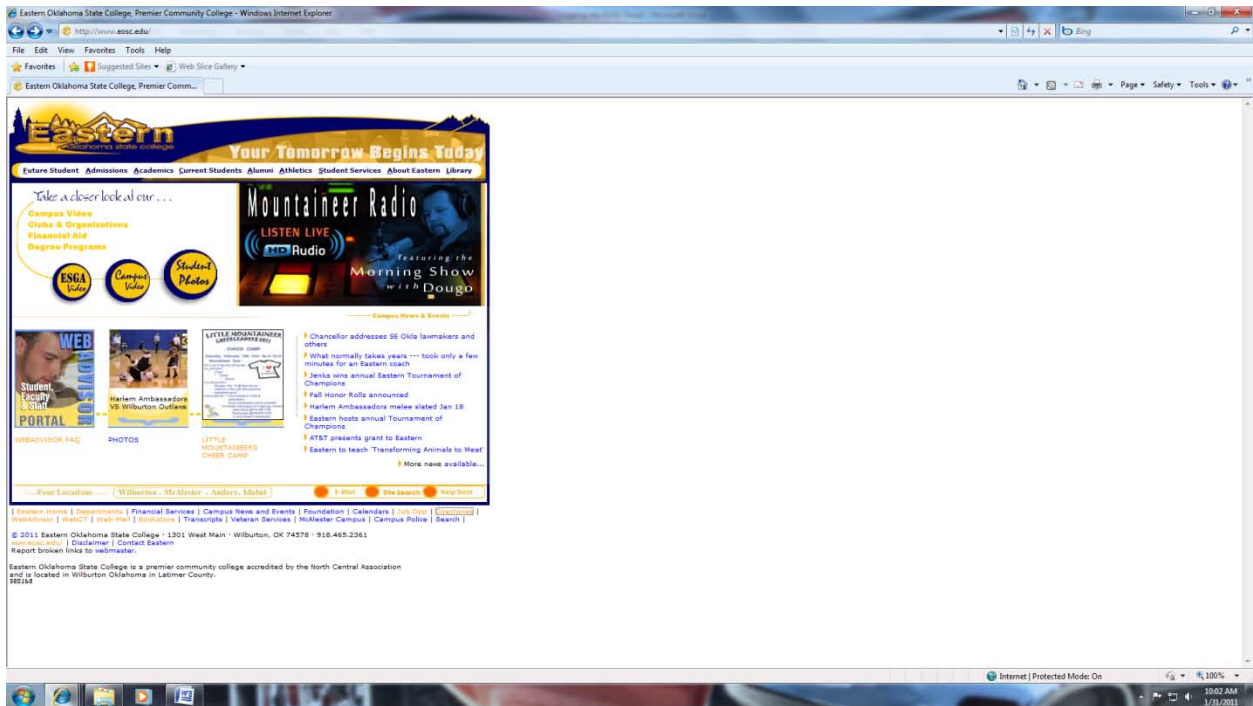


To find your EOSC email address, click on the **Directories** link on the bottom right of the EOSC home page and then click on **Student E-Mail Directory**.

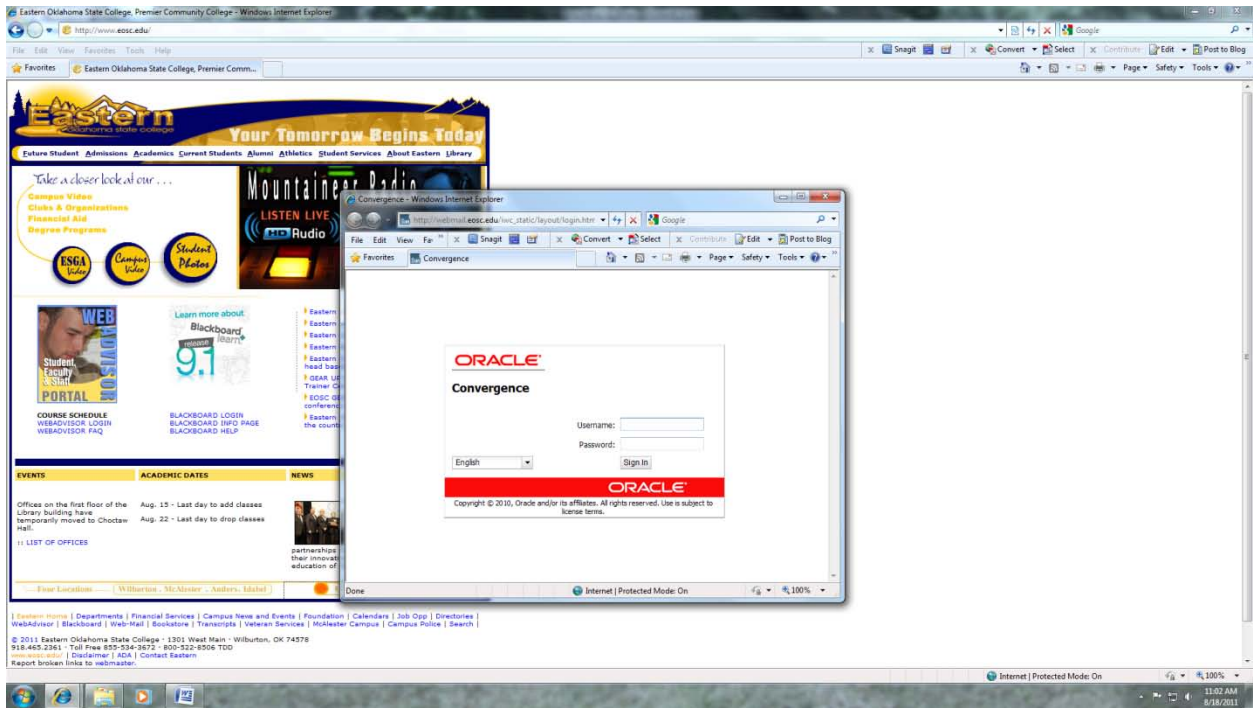




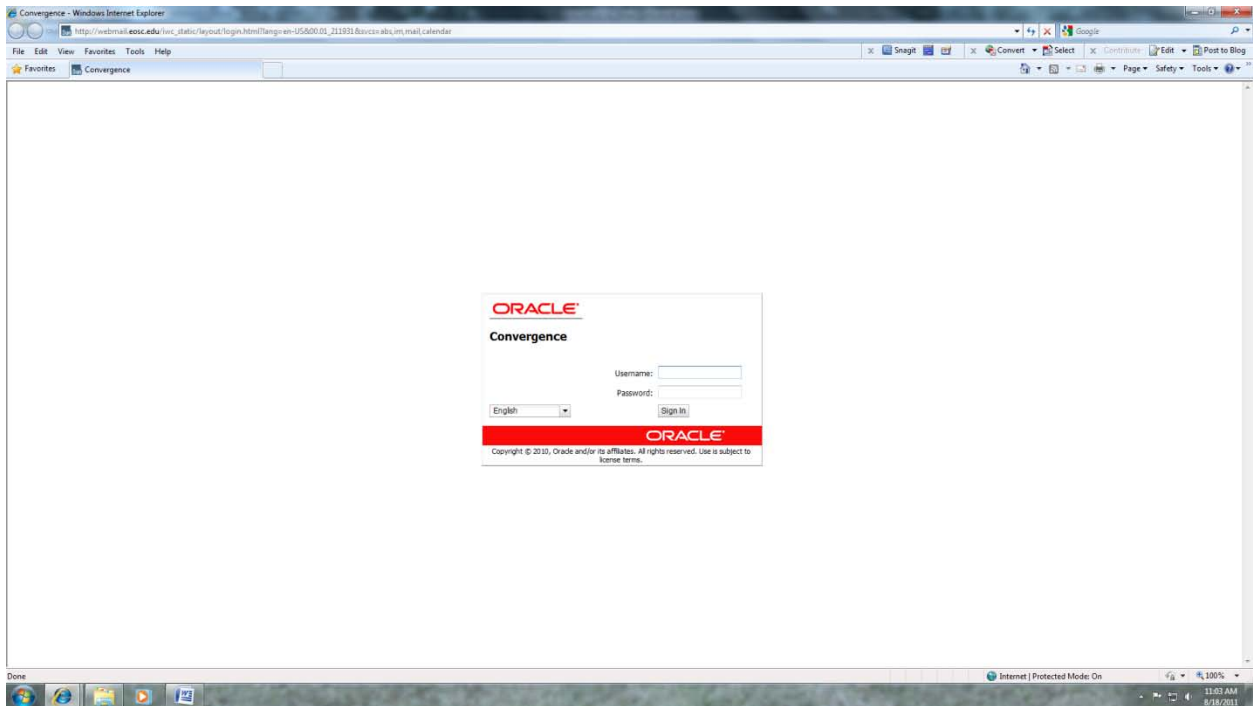
To check your email, click on the **E-Mail** link on the bottom right of the EOSC home page.



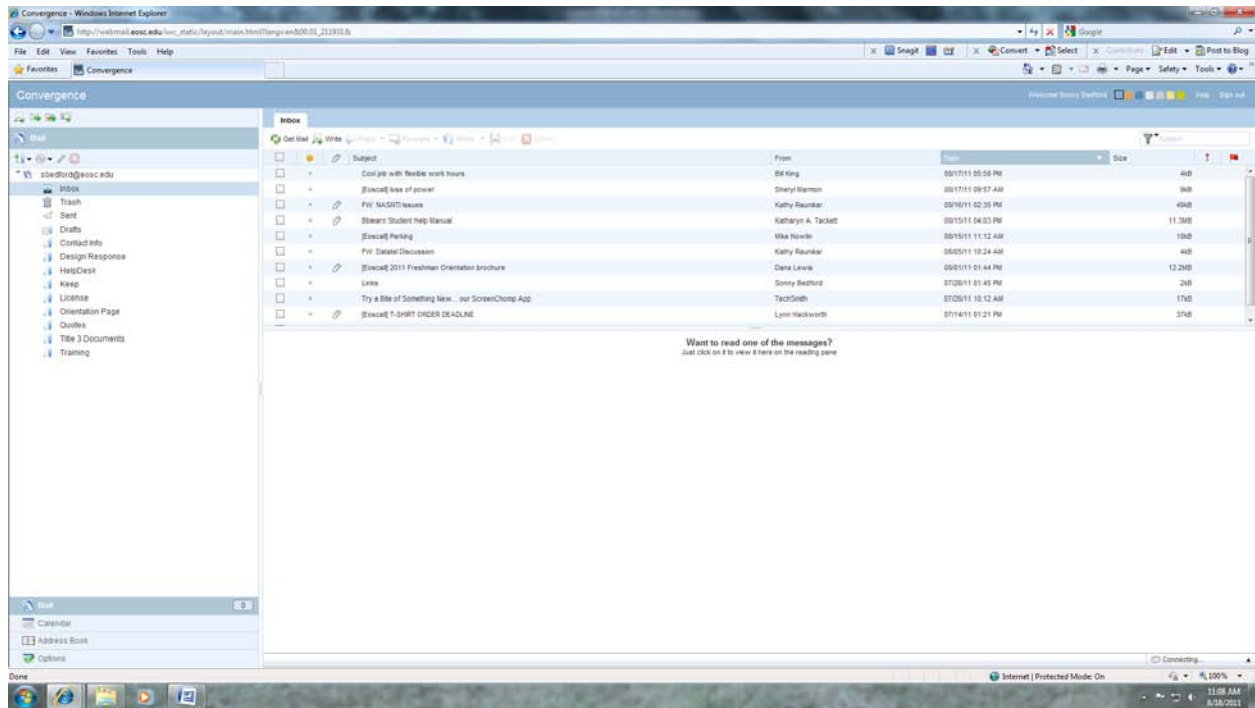
A new window will open. You may resize or maximize it if you wish.



On the Oracle EOSC email page, enter your username and password. Your default password is the last 4 digits of your SSN.



When you finish working in your EOSC email account, logout by clicking the Sign out link at the upper right side of the screen.



EOSC emails are sent to your student EOSC email account. When you register for classes, WebAdvisor sends a confirmation email to your EOSC email account. You should check your account regularly.